

## Vista Hut Trip Summary

### TRIP DATES.

- **March 25th - April 1st, 2023**
  - March 25, 2023 - 8:00 am Depart by helicopter from [GAH flight staging](#) located 50 km NW of Golden BC
  - April 1st, 2023 - Depart from Vista Lodge
- Weather permitting, occasionally flights are delayed due to poor weather conditions for as much as a day, please plan accordingly

### GETTING TO GOLDEN

- Closest reliable airport: Kelowna 4 hours from Golden
- Closest major international airport: Vancouver YVR
- Please see the attached directions for the staging area

### PAYMENT

- **Trip Cost:** \$3,100 plus GST of 5%
- **Deposit:** 50% due at the time of booking
- **Final Payment Due:** November 1, 2022

### Trip Cancellation Insurance:

Today with the unexpected changes from COVID we strongly recommend you purchase Travel and Trip Cancellation insurance. Most providers will cover you if you get COVID and cannot join your trip. This is the safest and most reliable way to get your money back in case the unexpected happens. You may use any insurance company of your choice or you can use our preferred provider: [Sunlife Financial](#)

### Included In The Cost Of The Trip:

- Guiding services
- Pre-trip support

- Trip Planning
- All meals while at the lodge (we do our best to cater to everyone's taste). If extreme dietary needs are requested additional costs might be required, please reach out if you have any questions regarding if your diet will incur extra costs.

### **Not Included In The Cost:**

- Gratuities for staff (including cooks, guides, and custodians).
- All equipment is listed in the equipment list.
- Travel/Accommodation to and from Golden

### **Health & Safety Policies:**

This trip is run at Vista Lodge which is owned by Golden Alpine Holidays. We are subject to their health and safety policies regarding COVID-19. Please see their policies [here](#).

We will also be following our own [policies](#).

Please note that the situation with COVID-19 is improving and these policies were built during the peak of the pandemic, managing the situation with zero vaccines available. We fully expect our policies to change and adapt to the most appropriate situation in 2023.

We will be following all public health recommendations and best practices regarding your health for this trip. After two years of safely managing the pandemic, the team at KBG is confident we will be able to run this trip safely, especially with the high uptake in vaccinations that Canada is currently undertaking.

**Booking Policies:** Please see our policies [here](#).



## Lodge Week Packing & Equipment List

Welcome to our lodge week program at Kootenay Backcountry Guides.

Having the proper equipment and packing list will allow you to have the best time on this trip. Please follow this list to make sure that you have all of the proper equipment and extras for the lodge.

### **Your preferred methods of travel:**

**Alpine Touring Bindings:** These are downhill skis with a touring binding. Bindings come in a couple of styles:

1. Tech bindings. This binding has pins that connect with holes in the toe of your boots. You need to have Tech Toe boots for these bindings to work. See [this image](#) for an idea of what we are describing. If you want a lightweight tech binding, the [Dynafit Radical](#) is a great example. The [Marker KingPin](#) is a decent choice that combines a regular releasable heel with a tech-style toe piece. There are many options available for different tech bindings and boot combinations. One challenge with tech bindings is that they do not adhere to the DIN system and can be hard to operate. The [Solomon Shift](#) binding has tried to deal with the DIN issue by making a regular binding that turns into a tech binding for the climb. There will be more options coming on the market that do the same.
2. Frame Bindings. This is where there is a regular toe and heel piece but the heel can unlock. See [this image](#) for details. Frame bindings are heavy, they walk awkwardly, thus reducing your efficiency in the mountains, they are also **NOT** stronger than tech bindings, and often break. These bindings are designed for very short tours of less than 45min in duration. We have seen many people unable to finish their days because they have heavy bindings.

**Telemark skis:** These are becoming less and less popular as the world of alpine ski touring grew as equipment has changed with innovation. This system can be challenging. Releasable bindings are highly recommended as this is a major safety advantage.

**Splitboarding:** This is the most effective and lightweight way to snowboard in the backcountry. As technology has improved over the last 5 years split-boarding has been the go-to for all snowboarders in the backcountry. You need to purchase splitboard bindings. The [Spark Binding](#) set up or the [Burton Hitchhiker](#) is the most popular. Check out [Tribute Board Shop](#) in Nelson for your splitboarding needs. More and more people are moving towards hard boot and Tech Bindings for splitboarding. Check out the [Phantom](#) setup for more info.

**Boots:** Those who choose Alpine Touring will want to have Alpine Touring Boots with Vibram Soles. Please make sure that if you have a tech binding, you buy boots with a tech toe. See the (**Alpine Touring skis/bindings section for details**). Alpine Touring Boots are designed for walking and skiing. They have a walk mode that allows your ankle to flex and a rockered sole for easy walking. Downhill Alpine boots are not recommended, even ones with a walk mode, these boots are significantly heavier and less comfortable than an Alpine Touring boot. We have seen many people unable to finish their days because they bring heavy boots.

**Splitboarding Boots:** Pretty much all snowboarding boots work with Splitboard bindings. Make sure you get boots that are designed for long walks. If you want a hard boot setup go to the [Phantom](#) page to find out what boots they recommend.

**Backpack:** Having a properly fitting backpack is crucial to having a comfortable day in the backcountry. We recommend a pack between 30 and 45L. The best packs have compartments for your avalanche safety gear. Please make sure your pack has attachments to carry your skis or snowboard in the event that we bootpack to a summit. Having a helmet holder is also important.

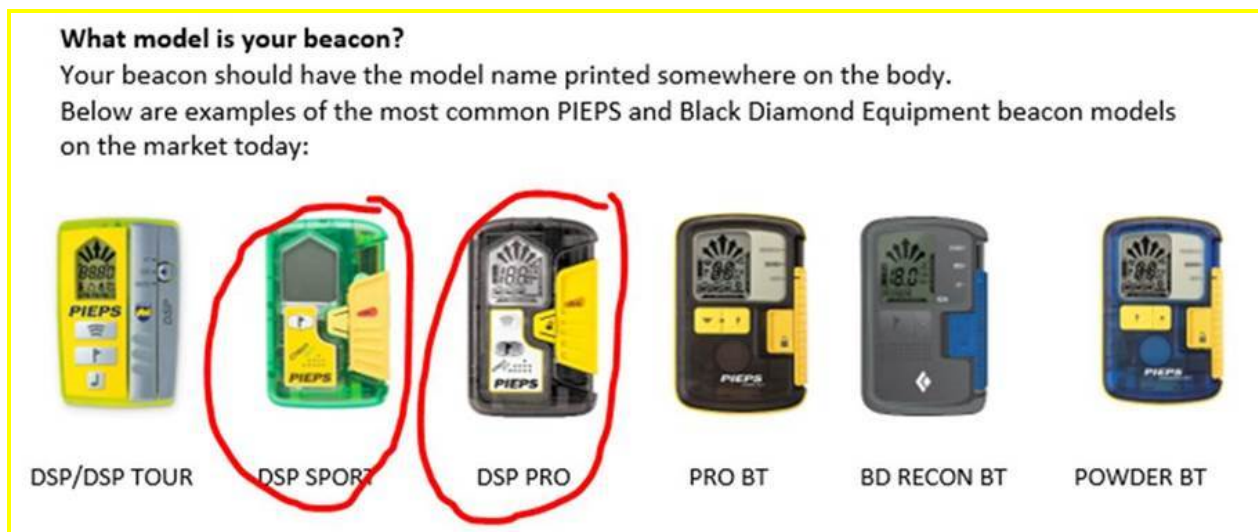
#### **Avalanche Safety Gear:**

**Transceivers:** You need to have a modern triple antenna digital transceiver, we do not allow analog or dual antenna transceivers on our trips or courses. All new modern triple antenna transceivers are good. Select one that you think fits your needs. **You should be very suspicious of purchasing transceivers on Facebook Marketplace or from other used gear sources. You do not know how that transceiver has been treated or how old it is.**

See [this video](#) for an overview of what to look for in transceivers.

If you are looking for a good site to check out all the different transceivers and what features are available. Go to <https://beaconreviews.com/>

Please note that if you have a Pieps DSP Sport or Pro, these transceivers have issues with their lock buttons. Please take them to your local gear shop to get them checked out.



**Shovel:** Shops offer a wide range of excellent shovels. Do not buy plastic or super lightweight shovels. Check out [this video](#) for what to look for in a shovel.

**Probe:** Make sure you are buying a high-quality probe that is easy to put together.

See [this video](#) for what to look for in a probe.

All new models have a quick snap to lock the probe in place, we do not recommend screw-in tops for avalanche probes. BCA makes great probes at a reasonable price. We recommend that your probe is 300cm or longer.

**Transceivers, Shovels, and Probes can be rented from KBG all prices are for the whole trip.**

Shovel (\$35), Probe (\$35), Transceiver (\$100)

You can rent the whole package off us for \$125

**Skins:** Choose a skin that is appropriate for your skis or splitboard. Make sure to follow the instructions carefully when setting them up. G3 Alpinist Skins are a great easy skin to set up, they make them for both Skis and Splitboards.

**Airbag Packs:** Avalanche airbags are **not** mandatory on our courses or trips. European studies show they significantly reduce your chances of being buried in an avalanche. There are many different makes and models to choose from and range from \$700 to \$1800. These can be rented from [Roam Shop](#) in Nelson B.C.

Kootenay Backcountry Guides has a 45L BCA airbag pack available to rent for the week. The total cost for rental for the week is \$200. Roam rents their pack for \$50 per day.

\*\*\* Please make sure that all of the above equipment is modern and in good working order. It is not a good idea to try out brand new boots on this trip as you might end up with blisters from uncomfortable boots that make it difficult to complete the tours.

#### **Outerwear:**

- High-quality waterproof breathable shell and pants. We recommend a 3-ply gore-tex-like jacket and pants. Softshell pants are highly recommended as well.
- Warm toque.
- A touring hat. (Preferably a KBG touring hat!)
- Ski boots or snowboard boots.
- Helmet, which should be lightweight for carrying
- 2 pair of water-resistant gloves or mitts
- High-quality ski or snowboard socks, one for each day.
- Long underwear top and bottom, we recommend changing out every two days. This will require 3-4 pairs.
- A warm Puffy Thinsulate or down jacket
- Lightweight thin insulate jacket for touring, [Arc Teryx Atom jacket](#) is a perfect example of this.
- Goggles and sunglasses. (bring spares of each) it would suck to have your goggles damaged or fogged beyond repair on a deep powder day.
- Sunscreen
- A thermos of tea or coffee for the day
- 1-liter water bottle
- Optional. A high-quality camera
- Phone for pictures
- Ski Crampons
- A lightweight headlamp in your pack for emergency use.

Lodge gear: (preferably packed away in a lightweight duffle bag)

- Toiletries, toothbrushes, toothpaste.
- Extra socks, long underwear, a couple of changes for the week.
- Hut booties or sandals with non-marking soles for the lodge, deck, and trip to the sauna
- Comfortable clothes for wearing in the hut
- Swimsuit for the hot tub and sauna
- Books for reading in the evening
- Tablet or Smart Phone for using navigation apps like Google Maps and Google Earth
- Chargers for your electronic devices
- A thermos for bringing hot liquids for the day
- (Prescription medicine, extra contact lenses, prescription glasses, etc.)
- Health/Travel insurance documents/numbers (For people out of province)
- Zip-lock bag for wallet and other documents to keep them dry (recommended)
- Extra batteries for your transceiver and headlamp
- A couple of 1-2 liter water bottles.
- Any alcohol you wish to bring. (no glass)

### **Renting and Purchasing Equipment:**

[ROAM Shop](#) in Nelson rents transceivers, shovels, and probes. They also rent tech binding equipped touring skis, boots, poles, and a wide selection of splitboards. We have teamed up with [ROAM Shop](#) to offer all registered program participants renting gear to take one day's cost of gear rented from them off the purchase price of new gear. This means you can test out the gear you are thinking of buying. Also, you get a 10% discount on rentals and a 5% discount on all purchases of new gear at [ROAM Shop](#). Please make sure you **let them know you are a registered participant in a KBG program at the time of purchase!**

Check their rental fleet [HERE](#) and fill out the [Winter Rental Waiver Form](#) as soon as possible.

[Tribute Boardshop](#) rents splitboards.

[Sacred Ride](#) in Nelson has a good selection of skis, boots, and splitboards.





**2020/21 WINTER WELCOME PACKAGE**

[www.gah.ca](http://www.gah.ca)



# PRE-TRIP PLANNING

## WAIVER

Attached in this email will be a copy of the waiver you will have to sign in person before your trip. Please fill out the attached waiver and email it back to us with the personal information requested in it. This step is to acknowledge that you are aware you will need to sign the waiver in person and allow us to have the waiver printed and ready for signing for the morning of your trip.

- Waiver signings will begin at 8 am MST the morning of your trip GAH staging.
- There is a table for each lodge in the staging building (Quonset), please find your lodge and sign your waiver and complete the COVID-19 screening.
- GAH staff are required to witness you sign so please do not have another member of your group sign as a witness.

## HOW TO PACK

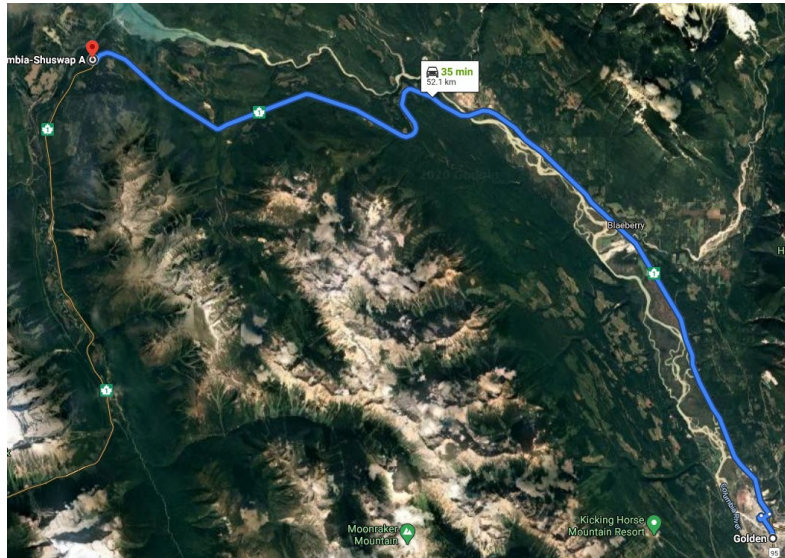
- Small duffle bag roughly 30L – NO HARD BOTTOM TRAVEL BAGS
- Normal daypack no larger than 40L
- Be ready with ski boots on before flying in
- Wearing your helmet also saves space in the Heli. Tighter packed gear results in smoother travel!
- Self Catered groups need only bring their food, dishes and kitchen tools are provided.
- Banana boxes (48cm x 38cm x 24cm) work the best to pack your food. They stack well and fit into all the spots in the helicopter smoothly
- Only one pair of skis or snowboard per person, strap poles to skis
- Keep your beer and other alcohol in a box that is well packed and secure
- FILLED CANISTERS: No compressed canisters are permitted in the cabin of the helicopter make sure that air bags are known to be that so they can be placed in the basket.



# TRIP ITINERARY

DAY 1: All times listed are MST

- **8:00 AM**: Arrive at GAH flight staging located 50 km NW of Golden BC: [GAH Staging](#)



- Parking is tight! Please do your best to **CARPPOOL** with other members of your trip.
  - GAH staff will direct you where to park so that you park with all inbound trips.
  - Put on your mask (due to COVID-19 regulations masks must be worn at the staging facility and in the helicopter)
  - Put on your ski/snowboard boots and begin shuttling your gear to the helipad
  - On the way to Helipad GAH staff will check you in and ask you the following COVID-19 screening questions.
    - Have you travelled outside of Canada in the past 14 days?
    - Have you been in contact with someone in the past 14 days who has positively tested for COVID-19?
    - Are you experiencing any symptoms related to COVID-19? (shortness of breath, cough, fever, sore throat)
  - At the Helipad place your gear with the lodge sign you are attending and flag all gear with the designated flagging tape. **SUNRISE**, **MEADOW**, **VISTA**, **SENTRY**
  - Bring a bagged lunch and water for the first day in case of delays!!
- **9:00 AM**: Helicopter will arrive and commence safety briefing, flights will commence after briefing
- Typical plan is to fly in order, but this is always a moving target due to weather. It can feel pointless to wait and we understand that but to keep it moving in all situations is why all 4 lodges arrive at the same time.
  - Flight times range from 4-10 minutes depending on the lodge and weather

# PACKING LIST

GENERAL	SKIING
<ul style="list-style-type: none"> <li><input type="checkbox"/> Skis/Splitboard: No ski bags. Split together with bindings off. Skins OFF.</li> <li><input type="checkbox"/> Daypack – Max 40L</li> <li><input type="checkbox"/> Beer / Booze: Cans are preferred to ensure that all of it is packed and secure separate from luggage</li> <li><input type="checkbox"/> Face mask</li> <li><input type="checkbox"/> Personal hand sanitizer</li> </ul>	<ul style="list-style-type: none"> <li><input type="checkbox"/> Skis/splitboard</li> <li><input type="checkbox"/> Poles – attach to skis</li> <li><input type="checkbox"/> Skins – in your pack</li> <li><input type="checkbox"/> Boots – on your feet</li> <li><input type="checkbox"/> Avalanche Probe – 300 cm!!</li> <li><input type="checkbox"/> Shovel</li> <li><input type="checkbox"/> Avalanche Transceiver – 3 antennae required + extra batteries</li> <li><input type="checkbox"/> Helmet – wear it in Heli, saves space</li> <li><input type="checkbox"/> Radio – recommended each guest carries a VHF radio, vital in communication</li> </ul>
SKI CLOTHING	PERSONALS
<ul style="list-style-type: none"> <li><input type="checkbox"/> Long underwear/undershirt</li> <li><input type="checkbox"/> Outer Jacket/Pants – GORETEX style shell, light with waterproofing</li> <li><input type="checkbox"/> Light Down Jacket</li> <li><input type="checkbox"/> Thin touring jacket – protects from elements</li> <li><input type="checkbox"/> Gloves – 2 pairs, thin for uptrack/thick for the down</li> <li><input type="checkbox"/> Head Gear – ballcap and toque</li> <li><input type="checkbox"/> Goggles and sunglasses</li> </ul>	<ul style="list-style-type: none"> <li><input type="checkbox"/> Underwear and ski socks</li> <li><input type="checkbox"/> Toiletries: toothbrush, toothpaste, floss, soap, shampoo</li> <li><input type="checkbox"/> Medications, anti inflammatories</li> <li><input type="checkbox"/> Anti-blister material</li> <li><input type="checkbox"/> Towel + Bathing Suit</li> <li><input type="checkbox"/> Hut Clothes (pack light)</li> <li><input type="checkbox"/> Hut slippers</li> <li><input type="checkbox"/> Outdoor boots</li> <li><input type="checkbox"/> Ear plugs for snoring</li> <li><input type="checkbox"/> Pre-download tunes to your device</li> <li><input type="checkbox"/> Battery/Charging pack</li> </ul>
DAY PACK – additional items	
<ul style="list-style-type: none"> <li><input type="checkbox"/> Lunch Container</li> <li><input type="checkbox"/> Water bottle/thermos</li> <li><input type="checkbox"/> Sunscreen / Lip balm</li> <li><input type="checkbox"/> Headlamp</li> <li><input type="checkbox"/> Pocket Knife/Screwdriver/Leatherman</li> <li><input type="checkbox"/> Repair kit</li> <li><input type="checkbox"/> Personal First Aid Kit</li> <li><input type="checkbox"/> Extra transceiver batteries</li> </ul>	

# LODGE INFO

## ROLE OF LODGE CARETAKER/CUSTODIAN

- GAH lodge caretaker is there to make you aware of the lodge systems and create a safe environment
- The lodge caretaker is the link to the outside world and will provide you each morning with that day's weather and avalanche bulletin
- The caretaker is not a guide and will not give advice on where to tour/ski. They may choose to advise on where NOT to go given on their own personal assessment, but it is up to you and your group to make your own decisions
- Lodge rentals are required to include the caretaker in their meal plans
- There are a lot of chores to be done around the lodge and the caretaker is there to assist with them, but it will take all the group to help get them done
- GRATUITY/TIPS are appreciated. Please bring cash or share contact info for after the trip

## SLEEPING

- Sheets, duvets, and pillows are provided
- Rooms are shared in groups of 2 with either bunk beds or separate single beds
- Head to toe is recommended to keep 2 m apart

## ELECTRICITY

- Sentry is equipped with its own micro hydro system so charging devices is easy but please still be respectful
- Sunrise is fortunate to get lots of sun and utilizes solar panel to power lights and radio
- Generators at Sunrise, Meadow and Vista will be run for a couple hours at night to charge radios and devices.
- Priority is for charging radios at night, please bring a battery/charging pack to charge any additional devices

## SAUNA/SHOWERS

- Each lodge has a wood burning dry sauna with either a gravity shower or bowls to bath
- Due to COVID-19 saunas must be used with members of your own pod and will be cleaned in between
- Bring bathing suit and towel

## NAVIGATION

- Download the GAH map through the boonmaps app before you arrive
- You can track your day and locate yourself and mapped runs while in the field
- [Apple](#)
- [Android](#)

## EVACUATION/TRAVEL INSURANCE

- In case of an emergency our office will contact Search and Rescue to conduct the rescue procedure
- GAH will cover the helicopter fee for evacuations related to nonemergency medical issues
- Groups are required to bring VHF radios, GAH will sign out at least one additional company radio to the group leader
- If you are unfit to attend the trip due to COVID-19 GAH will refund the helicopter fee portion of your trip
- We recommend that you purchase Cancellation Insurance the day you book your trip. You may use any Insurance company of your choice. We recommend the Backcountry Lodges of British Columbia Association. They can be reached at 1-877-542-8577 or by visiting their website at: <https://lifestylefinancial.ca/get-a-quote/blbca/>

## GAH RADIO CHANNELS

CH	RX	TX	User	Location	Sequence/Tone
1	170.100	169.110	GAH	Golden	Tone 100.0
2	170.100		GAH	Simplex	

- For local radio rentals or service contact Evan at Alpine IT Services 250-344-1772

**RELEASE OF LIABILITY, WAIVER OF CLAIMS,  
ASSUMPTION OF RISKS AND INDEMNITY AGREEMENT  
(hereinafter the "Release Agreement")**

**BY SIGNING THIS DOCUMENT YOU WILL WAIVE OR GIVE UP CERTAIN  
LEGAL RIGHTS, INCLUDING THE RIGHT TO SUE FOR NEGLIGENCE, BREACH OF  
CONTRACT OR BREACH OF THE OCCUPIERS LIABILITY ACT OR CLAIM  
COMPENSATION FOLLOWING AN ACCIDENT**

**PLEASE READ CAREFULLY!**

**THIS RELEASE AGREEMENT SHALL APPLY TO ALL FUTURE PARTICIPATION IN  
WILDERNESS ACTIVITIES**

Initial

<b>Name</b>	Last	First	Middle Initial
<b>Address</b>	Street	City	
	Prov/State	Country	Postal/ Zip Code
<b>Telephone</b>	Emergency Contact Name		Emergency Contact #
<b>Date of Birth</b>	<b>Lodge Attending</b>		
<b>Email Address</b>	<b>Trip Start Date</b>		

**TO: Golden Alpine Holidays Inc.,** carrying on business as **Golden Alpine Holidays Inc., Her Majesty the Queen in the Right of the Province of British Columbia, Sunrise, Meadow, Vista & Sentry Lodges, Backcountry Lodges of BC Association, Alpine Helicopters Inc., SilverKing Helicopters Inc.** and their directors, officers, employees, guides, agents, independent contractors, subcontractors, representatives, successors, assigns and guests (all of whom are hereinafter collectively referred to as "the Releasees")

**DEFINITION**

In this Release Agreement, the term "**wilderness activities**" shall include but is not limited to: alpine skiing, nordic skiing, telemark skiing, snowboarding, snowshoeing, hiking, touring, ski and snowboard touring, mountaineering, ski and snowboard mountaineering, rock climbing, ice climbing, expeditions, trekking, glacier travel, and all activities, services and use of facilities (including the lodge and all other buildings), either provided by or arranged by the Releasees including orientation and instructional sessions or classes, transportation, accommodation, food and beverage, water supply, and all travel by or movement around helicopters, other aircraft, snowcats, snowmobiles or other vehicles, and all other activities and services in any way connected with or related to wilderness activities.

**ASSUMPTION OF RISKS – AVALANCHES, ALPINE TERRAIN, WILDERNESS TRAVEL, WEATHER**

I am aware that participation in wilderness activities, involves many risks, dangers and hazards. Avalanches occur frequently in the terrain used for wilderness activities and may be caused by natural forces or by persons travelling through the terrain. I am aware that the Releasees may fail to predict whether the terrain is safe or whether an avalanche may occur. The terrain used for wilderness activities is uncontrolled, unmarked, not inspected, and involves many risks, dangers and hazards in addition to that of avalanche. These may include, but are not limited to: cornices; crevasses; cliffs; trees, tree wells; tree stumps; forest dead fall; creeks; rocks; rockfall; boulders; holes and depressions on or below the snow surface; variable and difficult snow conditions; hypothermia, snow immersion; slips trips and falls; effects of high altitude including pulmonary edema and cerebral edema; infectious disease contracted through viruses, bacteria, parasites, and fungi which may be transmitted through direct or indirect contact; equipment failure; encounters with domestic and wild animals; impact or collision with other persons including other guests; becoming lost or separated from one's party or guide; negligence of other persons; and **NEGLIGENCE ON THE PART OF THE RELEASEES. I UNDERSTAND THAT NEGLIGENCE INCLUDES FAILURE ON THE PART OF THE RELEASEES TO TAKE REASONABLE STEPS TO SAFEGUARD OR PROTECT ME FROM OR WARN ME OF THE RISKS, DANGERS AND HAZARDS OF PARTICIPATING IN WILDERNESS ACTIVITIES.** Communication in wilderness areas may be difficult, and in the event of an accident or illness, rescue, medical treatment and evacuation may not be available or may be delayed. Mountain weather conditions may be extreme and can change rapidly and without warning.

**I AM AWARE OF THE RISKS, DANGERS AND HAZARDS ASSOCIATED WITH WILDERNESS ACTIVITIES AND I FREELY ACCEPT AND FULLY ASSUME ALL SUCH RISKS, DANGERS AND HAZARDS AND THE POSSIBILITY OF PERSONAL INJURY, DEATH, PROPERTY DAMAGE OR LOSS RESULTING THEREFROM.**

**NOTICE TO SNOWBOARDERS, SNOWSHOERS AND TELEMAR SKIERS - INCREASED RISK**

Unlike alpine ski boot/binding systems, snowboard, snowshoe and some telemark boot/binding systems are not designed or intended to release and will not release under normal circumstances, thus increasing the risk of not surviving an avalanche.

**NON-SCHEDULED OR EMERGENCY EVACUATION, RESCUE OR FIRST AID**

I acknowledge and agree that all expenses associated with non-scheduled or emergency evacuation, rescue or first aid will be my responsibility and will not be covered by the Releasees.



**RELEASE OF LIABILITY, WAIVER OF CLAIMS,  
ASSUMPTION OF RISKS AND INDEMNITY AGREEMENT**

**BY SIGNING THIS DOCUMENT YOU WILL WAIVE OR GIVE UP CERTAIN LEGAL RIGHTS, INCLUDING THE RIGHT TO SUE FOR NEGLIGENCE, BREACH OF CONTRACT OR BREACH OF THE OCCUPIERS LIABILITY ACT OR CLAIM COMPENSATION FOLLOWING AN ACCIDENT**

***PLEASE READ CAREFULLY!***

***THIS RELEASE AGREEMENT SHALL APPLY TO ALL FUTURE PARTICIPATION IN WILDERNESS ACTIVITIES***

Initial

**RELEASE OF LIABILITY, WAIVER OF CLAIMS AND INDEMNITY AGREEMENT**

In consideration of the Releasees allowing me to participate in wilderness activities as defined in this Release Agreement, and for other good and valuable consideration, I hereby agree as follows:

1. **TO WAIVE ANY AND ALL CLAIMS** that I have or may in the future have against the Releasees and **TO RELEASE THE RELEASEES** from any and all liability for any loss, damage, expense or injury including death that I may suffer, or that my next of kin may suffer as a result of my participation in wilderness activities, DUE TO ANY CAUSE WHATSOEVER, INCLUDING NEGLIGENCE, BREACH OF CONTRACT, OR BREACH OF ANY STATUTORY OR OTHER DUTY OF CARE, INCLUDING ANY DUTY OF CARE OWED UNDER THE **OCCUPIERS LIABILITY ACT**, R.S.B.C. 1996, c. 337, ON THE PART OF THE RELEASEES. I UNDERSTAND THAT NEGLIGENCE INCLUDES FAILURE ON THE PART OF THE RELEASEES TO TAKE REASONABLE STEPS TO SAFEGUARD OR PROTECT ME FROM OR WARN ME OF THE RISKS, DANGERS AND HAZARDS OF PARTICIPATING IN WILDERNESS ACTIVITIES;

- 2. TO HOLD HARMLESS AND INDEMNIFY THE RELEASEES from any and all liability for any property damage or personal injury to any third party resulting from my participation in wilderness activities;
- 3. This Release Agreement shall be effective and binding upon my heirs, next of kin, executors, administrators, assigns and representatives, in the event of my death or incapacity;
- 4. This Release Agreement and any rights, duties and obligations as between the parties to this Release Agreement shall be governed by and interpreted solely in accordance with the laws of British Columbia and no other jurisdiction; and
- 5. Any litigation involving the parties to this Release Agreement shall be brought solely within British Columbia and shall be within the exclusive jurisdiction of the Courts of British Columbia.

In entering into this Release Agreement I am not relying on any oral or written representations or statements made by the Releasees with respect to the safety of participating in wilderness activities, other than what is set forth in this Release Agreement.

**I CONFIRM THAT I HAVE READ AND UNDERSTAND THIS RELEASE AGREEMENT AND I AM AWARE THAT BY SIGNING THIS RELEASE AGREEMENT I AM WAIVING CERTAIN LEGAL RIGHTS WHICH I OR MY HEIRS, NEXT OF KIN, EXECUTORS, ADMINISTRATORS, ASSIGNS AND REPRESENTATIVES MAY HAVE AGAINST THE RELEASEES. I ACKNOWLEDGE THAT THIS RELEASE AGREEMENT SHALL APPLY TO ALL FUTURE PARTICIPATION IN WILDERNESS ACTIVITIES.**

Witness Signature
Witness Printed Name

Guest Signature
Guest Printed Name
Date
Signature of Parent or Guardian if guest is under age 19

**RELEASE OF LIABILITY, WAIVER OF CLAIMS,  
ASSUMPTION OF RISKS AND INDEMNITY AGREEMENT**  
(hereinafter the "Release Agreement")

**BY SIGNING THIS DOCUMENT YOU WILL WAIVE OR GIVE UP CERTAIN LEGAL RIGHTS,  
INCLUDING THE RIGHT TO SUE FOR NEGLIGENCE, BREACH OF CONTRACT OR  
BREACH OF THE OCCUPIERS LIABILITY ACT OR CLAIM COMPENSATION  
FOLLOWING AN ACCIDENT**

***PLEASE READ CAREFULLY!***

SIGNATURE OF CLIENT/STUDENT

<b>Name</b>	Last	First	Initial
<b>Address</b>	Street		
	City	Prov/State	Country
<b>Email Address</b>			
<b>Date of Birth</b>	Year	Month	Day
			Age
<b>Telephone</b>	Home	Office	Mobile
<b>Trip Date</b>	Year	Month	Day

(Write in name of guiding company, all guides on trip and supervising guide if you are an apprentice)

**TO:** Judson Wright, Whitewater Ski Resort Ltd, Knee Deep Developments Corporation, 1054686 Alberta Ltd., Lee Johnston, Jeremy Birse, Martin Lefebvre, Joe Pavelich, Roger Yim, Audray Wright, Nick Waggoner, Ramin Sherkat, Joel McBurney, Martin Lefebvre, Mark Duchesen, Carey Austerman, Alex Heathcott, Anais Sloman, Kyle Gorenko, Mara Vitols, Tallis Sabanski, Titouan Chopan, Tristan Kodors,

**ASSOCIATION OF CANADIAN MOUNTAIN GUIDES; HER MAJESTY THE QUEEN IN RIGHT OF CANADA;** and their directors, officers, employees, guides, agents, independent contractors, subcontractors, representatives, successors and assigns (all of whom are hereinafter collectively referred to as "**the Releasees**")

**WILDERNESS ACTIVITIES**

In this Release Agreement, the term "**wilderness activities**" shall include but is not limited to: alpine skiing, nordic skiing, telemark skiing, snowboarding, snowshoeing, hiking, touring, mountaineering, rock climbing, ice climbing, expeditions, trekking, glacier travel, and all activities, services and use of facilities either provided, arranged or organized by the Releasees including orientation and instructional sessions or classes, transportation, accommodation, food and beverage, and water supply, and all travel by or movement around helicopters, other aircraft, snowcats, snowmobiles or other vehicles and camping or overnight stays in the outdoors.

In this Release Agreement, the term "**Negligence**" includes the failure by the Releasees to use such care as a reasonably prudent and careful mountain guide/instructor would use under similar circumstances, or breach of any other duty of care imposed by law.

**I AM AWARE OF THE RISKS, DANGERS AND HAZARDS ASSOCIATED WITH WILDERNESS ACTIVITIES AND I FREELY ACCEPT AND FULLY ASSUME ALL SUCH RISKS, DANGERS AND HAZARDS AND THE POSSIBILITY OF PERSONAL INJURY, DEATH, PROPERTY DAMAGE OR LOSS RESULTING THEREFROM.**

**NOTICE TO SNOWBOARDERS AND TELEMAR SKIERS - INCREASED RISK**

Unlike alpine ski boot/binding systems, snowboard, and some telemark boot/binding systems are not designed or intended to release and will not release under normal circumstances, thus increasing the risk of not surviving an avalanche.

**NON-SCHEDULED OR EMERGENCY EVACUATION, RESCUE OR FIRST AID**

I acknowledge and agree that all expenses associated with non-scheduled or emergency evacuation, rescue or first aid will be my responsibility and will not be covered by the Releasees.

**RELEASE OF LIABILITY, WAIVER OF CLAIMS,  
ASSUMPTION OF RISKS AND INDEMNITY AGREEMENT**  
(hereinafter the "Release Agreement")

**BY SIGNING THIS DOCUMENT YOU WILL WAIVE OR GIVE UP CERTAIN LEGAL RIGHTS, INCLUDING THE RIGHT TO SUE FOR NEGLIGENCE, BREACH OF CONTRACT OR BREACH OF THE OCCUPIERS LIABILITY ACT OR CLAIM COMPENSATION FOLLOWING AN ACCIDENT**

**PLEASE READ CAREFULLY!**

SIGNATURE OF CLIENT/STUDENT

**ASSUMPTION OF RISKS – AVALANCHES, ALPINE TERRAIN, WILDERNESS TRAVEL, WEATHER**

I am aware that participation in wilderness activities involves many risks, dangers and hazards. Avalanches occur frequently in the terrain used for wilderness activities and may be caused by natural forces or by persons travelling through the terrain. I am aware that the Releasees may fail to predict whether the terrain is safe or whether an avalanche may occur. The terrain used for wilderness activities is uncontrolled, unmarked, not inspected, and involves many risks, dangers and hazards in addition to that of avalanche. These may include, but are not limited to: cornices; crevasses; cliffs; trees, tree wells; tree stumps; forest dead fall; creeks; rocks; rockfall; boulders; holes and depressions on or below the snow surface; variable and difficult snow conditions; lightning; effects of high altitude including pulmonary edema and cerebral edema; snow immersion; equipment failure; encounters with dangerous or poisonous flora and fauna; impact or collision with other persons; becoming lost or separated from one's party or guide; slips, trips and falls; infectious disease contracted through viruses, bacteria, parasites, and fungi which may be transmitted through direct or indirect contact; negligence of other persons; and **NEGLIGENCE ON THE PART OF THE RELEASEES. I UNDERSTAND THAT NEGLIGENCE INCLUDES FAILURE ON THE PART OF THE RELEASEES TO TAKE REASONABLE STEPS TO SAFEGUARD OR PROTECT ME FROM OR WARN ME OF THE RISKS, DANGERS AND HAZARDS OF WILDERNESS ACTIVITIES.** Communication in the alpine terrain may be difficult, and in the event of an accident or illness, rescue, medical treatment and evacuation may not be available or may be delayed. Alpine weather conditions may be extreme and can change rapidly and without warning. Disease may arise from the increased difficulty in maintaining personal hygiene.

**RELEASE OF LIABILITY, WAIVER OF CLAIMS AND INDEMNITY AGREEMENT**

In consideration of the Releasees allowing me to participate in wilderness activities as defined in this Release Agreement, I hereby agree as follows:

1. **TO WAIVE ANY AND ALL CLAIMS** that I have or may in the future have against the Releasees and **TO RELEASE THE RELEASEES** from any and all liability for any loss, damage, expense or injury including death that I may suffer, or that my next of kin may suffer as a result of my participation in wilderness activities, **DUE TO ANY CAUSE WHATSOEVER, INCLUDING NEGLIGENCE, BREACH OF CONTRACT, OR BREACH OF ANY STATUTORY OR OTHER DUTY OF CARE, INCLUDING ANY DUTY OF CARE OWED UNDER ANY APPLICABLE OCCUPIER'S LIABILITY LEGISLATION ON THE PART OF THE RELEASEES. I UNDERSTAND THAT NEGLIGENCE INCLUDES FAILURE ON THE PART OF THE RELEASEES TO TAKE REASONABLE STEPS TO SAFEGUARD OR PROTECT ME FROM OR WARN ME OF THE RISKS, DANGERS AND HAZARDS OF WILDERNESS ACTIVITIES REFERRED TO ABOVE;**
2. TO HOLD HARMLESS AND INDEMNIFY THE RELEASEES from any and all liability for any property damage or personal injury to any third party resulting from my participation in wilderness activities;
3. This Release Agreement shall be effective and binding upon my heirs, next of kin, executors, administrators, assigns and representatives, in the event of my death or incapacity;
4. This Release Agreement and any rights, duties and obligations as between the parties to this Release Agreement shall be governed by and interpreted solely in accordance with the laws of the province where the wilderness activities take place and no other jurisdiction; and
5. Any litigation involving the parties to this Release Agreement shall be brought solely within the province where the wilderness activities take place and shall be within the exclusive jurisdiction of the Courts of that province.

In entering into this Release Agreement I am not relying on any oral or written representations or statements made by the Releasees with respect to the safety of wilderness activities, other than what is set forth in this Release Agreement.

**I CONFIRM THAT I HAVE READ AND UNDERSTAND THIS RELEASE AGREEMENT PRIOR TO SIGNING IT, AND I AM AWARE THAT BY SIGNING THIS RELEASE AGREEMENT I AM WAIVING CERTAIN LEGAL RIGHTS WHICH I OR MY HEIRS, NEXT OF KIN, EXECUTORS, ADMINISTRATORS, ASSIGNS AND REPRESENTATIVES MAY HAVE AGAINST THE RELEASEES.**

Witness Signature
Please Print Name of Witness

Signature of client/student
Date
Signature of Parent or Guardian if under age 19